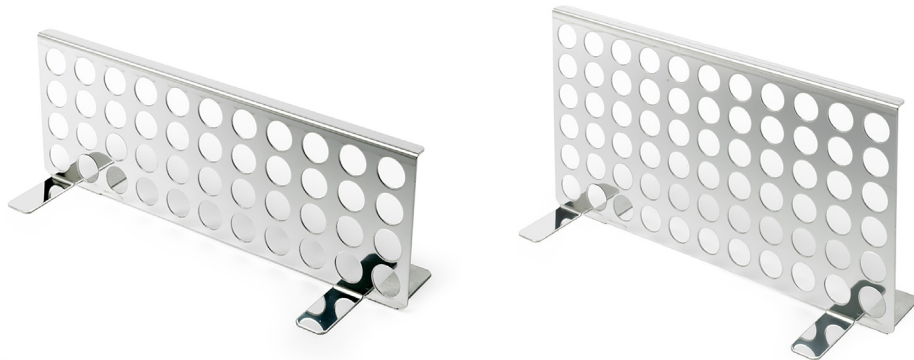


# Optional Accessories

## Stainless Steel Partitions



## Stainless Steel Partitions

### Compatible with the Pasto 12 and 26

Stainless steel partitions are used in sous vide cooking so as to divide the working area of a water bath and accurately control portions.

Separating food into different sections using the partitions allows the easy identification of ingredients. For example, ingredients that have just been placed into the sous vide water bath can be separated from those which have been in and reached the correct serving temperature.

The SVD S is compatible with the Pasto 12 range of sous vide water baths, with the SVD L compatible with the 26. Both are made from high quality stainless steel and are incredibly easy to clean.

#### Overall dimensions (h x w):

SVD S 96mm x 277mm

SVD L 148mm x 274mm

## Specification

### Stainless Steel Partition

- Two different sizes: SVD S for the Pasto 12 range; SVD L for the Pasto 26 range
- Easy to use, simply place in the centre of the sous vide water bath.
- Easy to clean
- High quality stainless steel design
- Great for separating different ingredients in the same sous vide water bath

# Creative Cuisine

by Grant



Brice Australia Pty. Ltd. ABN 71 413 589 669  
100% Australian owned and operated  
Copyright ©2019 Brice Australia Pty. Ltd.

**BRICE HEAD OFFICE:**  
11 Holloway Drive, Bayswater,  
Victoria 3153 Australia

**Ph: 1300 664 880**  
**www.briceaust.com.au**  
**email: info@briceaust.com.au**

